

Your FIRST homeownership STORY...



A 501 (c)(3) organization

(541) 728-0830 ext. 6
info@firststory.org
www.firststory.org

Bridgewater Park, Kennewick, WA

This Hayden Home, located in the new community of Bridgewater Park, is smartly designed living larger than most mid-sized plans. The entry leads to an open kitchen and living room with plenty of light and space for entertaining. The kitchen provides ample counter space and cabinetry and features an optional desk. Upstairs, the master bedroom has a large closet and bathroom and two other sizeable bedrooms.

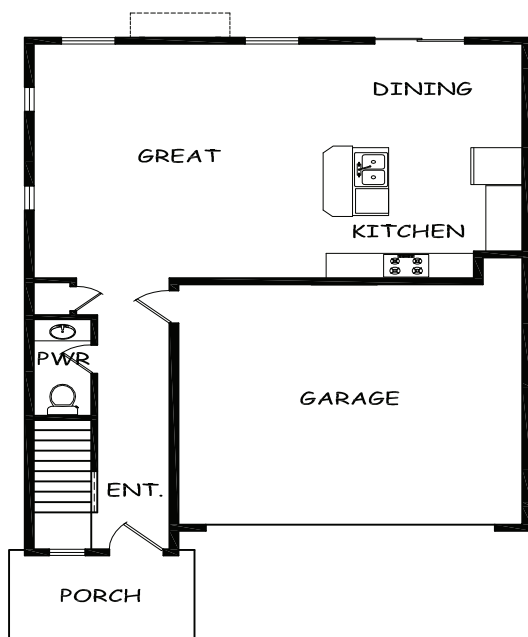
First Story will sell this home to a qualified family through a 30 year, no-interest, no down payment loan. Applicant must be below 80% of the area median income for Benton County. Loan documents include a Shared Appreciation Agreement. Download an application at firststory.org.

THE DARRINGTON

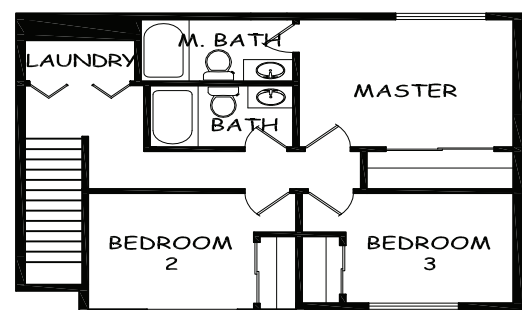
1,381 Square Feet - 3 Bedrooms - 2 Baths - 2 Car Garage
Fully Landscaped - Fenced Backyard - Optional Washer/Dryer
Built by,



HAYDEN HOMES
Building Better Communities Since 1989



MAIN LEVEL



UPPER LEVEL